



# Your electricity bill

Bill date: August 18, 2011

## Summary of what you owe

	Amount owing on your previous bill	\$200.16
<b>Less</b>	Payment made on Jul 25, thank you	-\$200.16
<b>Equals</b>	Your balance forward	\$0.00
<b>Plus</b>	Your new charges (details on following pages)	
	Cost of electricity (with taxes and fees)	\$383.34
<b>Equals</b>	<b>Total amount due</b>	<b>\$383.34</b>

**Due date: August 31, 2011**

**KATHLEEN CHERNAK**

**Your account number: 820964284**

**For service at:** 2664 W 5 St  
Spc A

**Questions or Office Locations?**

Call 602-371-6767 or 1-800-253-9407,  
Mon - Fri, 7:30am - 5:00pm

Website: [aps.com](http://aps.com)

Para servicio en español llame al:

602-371-6861 (Phoenix) o

1-800-252-9410 (Otras areas)

**When paying in person, please  
bring the bottom portion of your bill.**



**Your account number  
820964284**

**Bill date  
August 18, 2011**

Mailing address or phone number change?  
Please call 1-800-253-9407.

**Total amount due: \$ 383.34**

**Your optional contribution  
to SHARE: \$ \_\_\_\_\_**

**Total amount paid: \$ \_\_\_\_\_**

**Due date: Aug 31, 2011**

KATHLEEN CHERNAK  
DBA KATHLEEN TERTMAN  
#225  
2554 W 16 ST  
YUMA AZ 85364-4229



Your electricity bill  
August 18, 2011

KATHLEEN CHERNAK

Your account number  
820964284

Your service plan: E-32 XS/S

Meter number: W51241  
Meter reading cycle: 12

## Charges for electricity services

### Cost of electricity you used

Basic service charge	\$3.91
Delivery service charge	\$95.94
Demand charge - delivery	\$0.00
Environmental benefits surcharge	\$30.17
Federal environmental improvement surcharge	\$0.38
System benefits charge	\$4.93
Power supply adjustment*	-\$13.28
Metering*	\$12.49
Meter reading*	\$2.11
Billing*	\$2.33
Generation of electricity*	\$200.54
Federal transmission and ancillary services*	\$9.96
Federal transmission cost adjustment*	\$5.79
<b>Cost of electricity you used</b>	<b>\$355.27</b>

### Taxes and fees

Regulatory assessment	\$0.66
State sales tax	\$23.49
County sales tax	\$3.92
City sales tax	\$0.00
Franchise fee	\$0.00
<b>Cost of electricity with taxes and fees</b>	<b>\$383.34</b>

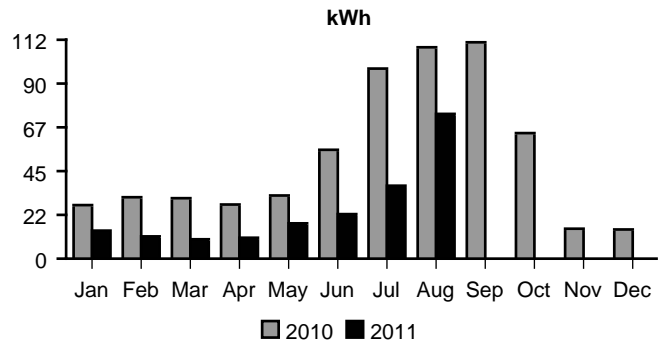
**Total charges for electricity services \$383.34**

\* These services are currently provided by APS but may be provided by a competitive supplier.

## Amount of electricity you used

Meter reading on Aug 15	14761
Meter reading on Jul 15	12413
<b>Total electricity you used, in kWh</b>	<b>2348</b>
Demand meter reading	6.20
<b>Your billed demand in kW</b>	<b>6.0</b>

## Average daily electricity use per month



## Comparing your monthly use

	This month	Last month	This month last year
Billing days	31	30	25
Average outdoor temperature	95°	93°	94°
Your total use in kWh	2348	1161	2751
Your billed demand in kW	6.0	6.0	7.0
Your average daily cost	\$12.36	\$6.67	\$17.42