

# Your electricity bill

Bill date: November 16, 2012

## Summary of what you owe

Amount owing on your previous bill	\$198.08
<b>Less</b> Payment made on Oct 29, thank you	<b>-\$198.08</b>
<b>Equals</b> Your balance forward	<b>\$0.00</b>
<b>Plus</b> Your new charges (details on following pages)	
Cost of electricity (with taxes and fees)	\$95.53
<b>Equals Total amount due</b>	<b>\$95.53</b>

**Due date: December 3, 2012**

KATHLEEN CHERNAK

**Your account number: 820964284**For service at: 2664 W 5 St  
Spc A**Questions or Office Locations?**Call 1-800-253-9407,  
Mon - Fri, 7:30am - 5:00pm  
Website: aps.com  
Para servicio en español llame al:  
1-800-252-9410**SIMPLIFY YOUR BILL  
WITH APS EQUALIZER**

When you sign up for Equalizer, our level-billing program, you'll discover how easy it is to predict what you owe. Goodbye surprises! Equalizer makes budgeting easier because you'll pay about **\$158.00 each month** for easier budgeting with Equalizer. To sign up, make your first Equalizer payment of **\$158.00** (instead of paying the amount due on this bill.)

Hurry, offer ends soon.

Page 1 of 3

See page 2 for more information.

**Your account number**  
**820964284****Bill date**  
**November 16, 2012**Mailing address or phone number change?  
Please call 1-800-253-9407.When paying in person, please  
bring the bottom portion of your bill.**Total amount due: \$ 95.53****Your optional contribution to SHARE:** \$ \_\_\_\_\_**Total amount paid:** \$ \_\_\_\_\_**Due date: Dec 3, 2012**KATHLEEN CHERNAK  
DBA KATHLEEN TERTMAN  
#225  
2554 W 16 ST  
YUMA AZ 85364-4229



## News from APS

### SMOOTH OUT THE HIGHS AND LOWS FOR EASIER BUDGETING. PAY \$158.00 EACH MONTH.

We know seasonal ups and downs can play havoc with your electric bills and your budget. That's why we offer Equalizer to eligible customers like you. With this billing program your payments are:

- More consistent each month so there are no surprises
- Based on your average energy use
- Easier to predict so you can stay on your budget

Sign up for Equalizer by paying **\$158.00** (instead of this bill's Total Amount Due) by the due date. Then enjoy more consistent monthly payments as early as your next statement.

Hurry, offer ends soon!

## Things you need to know

### Contacting APS

- E-mail us at [aps@aps.com](mailto:aps@aps.com)
- Call us at:  
602-371-6767 (Phoenix) or 800-253-9407 (Other areas)  
Mon-Fri, 7:30 am - 5:00 pm
- Para servicio en español llame al:  
602-371-6861 (Phoenix) o 1-800-252-9410 (Otras areas)
- Hearing impaired:  
Dial 711 - AZ Relay Service
- By mail: APS, Station 3200, PO Box 53933,  
Phoenix AZ 85072-3933
- Blue Stake - Before you dig, call:  
811 or 800-782-5348 from anywhere within Arizona
- Electrical emergencies other than power outages, call:  
602-258-5483 (Phoenix) or 800-253-9408 (Other areas)

### Important billing and collection information

Make checks payable to APS and mail to:  
APS, PO Box 2906, Phoenix AZ 85062-2906

Credit and Collections:  
602-371-7607 (Phoenix) or 1-800-253-9409 (Other areas)

All bills for utility services are due and payable no later than 15 days from the date of the bill. Any payments not received within this time-frame shall be considered delinquent and are subject to a late payment charge of 1.5% per month.

If your power is shut off for non-payment, you must pay all the delinquent amounts and a deposit or additional deposit before power is restored.

When you provide a check as payment, you authorize us either to use information from your check to make a one-time electronic funds transfer from your account or to process the payment as a check transaction. When we process your check electronically you will not receive your check back from your financial institution and funds may be withdrawn from your account on the same day we receive your payment.

### Utility regulations and rates (Not an APS payment site)

Electricity regulations and rates are approved by:  
Arizona Corporation Commission,  
1200 W Washington, Phoenix AZ 85007  
602-542-4251 (Phoenix) or 1-800-222-7000 (Other areas).  
[www.cc.state.az.us](http://www.cc.state.az.us)

### Sign up for SurePay Automatic Payments!

Kathleen Chernak	Phone (     )
Optional SHARE Contribution to be added to my Monthly Bill (\$1 to \$9) \$___	
My signature authorizes APS to electronically debit my bank account on the billing due date to pay the total amount due each month. Use the enclosed check payment to set up automatic payments. To terminate SurePay, I will contact APS. (Intended for mailed-in payments only. No counter checks.)	
Signature:	



PO BOX 2906  
PHOENIX AZ 85062-2906  
APDF1TTTDDTAACFATTATDLCFATITANFADJTDLFFTEANFAFFADDFDANFAFTEADDTDT

Your electricity bill  
November 16, 2012

KATHLEEN CHERNAK

Your account number  
820964284

Your service plan: E-32 XS/S

Meter number: W51241  
Meter reading cycle: 12

## Charges for electricity services

### Cost of electricity you used

Customer account charge	\$3.65
Delivery service charge	\$22.88
Demand charge - delivery	\$0.00
Environmental benefits surcharge	\$5.31
Federal environmental improvement surcharge	\$0.00
System benefits charge	\$1.63
Power supply adjustment*	-\$2.29
Metering*	\$11.69
Meter reading*	\$1.97
Billing*	\$2.18
Generation of electricity*	\$37.77
Federal transmission and ancillary services*	\$2.33
Federal transmission cost adjustment*	\$1.40
<b>Cost of electricity you used</b>	<b>\$88.52</b>

### Taxes and fees

Regulatory assessment	\$0.18
State sales tax	\$5.85
County sales tax	\$0.98
City sales tax	\$0.00
Franchise fee	\$0.00
<b>Cost of electricity with taxes and fees</b>	<b>\$95.53</b>

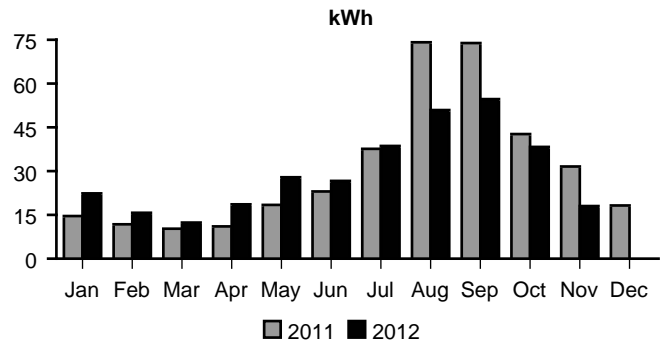
**Total charges for electricity services \$95.53**

\* These services are currently provided by APS but may be provided by a competitive supplier.

## Amount of electricity you used

Meter reading on Nov 16	30117
Meter reading on Oct 18	29568
<b>Total electricity you used, in kWh</b>	<b>549</b>
Demand meter reading	3.64
<b>Your billed demand in kW</b>	<b>4.0</b>

## Average daily electricity use per month



## Comparing your monthly use

	This month	Last month	This month last year
Billing days	29	29	28
Average outdoor temperature	72°	85°	73°
Your total use in kWh	549	1144	913
Your billed demand in kW	4.0	5.0	6.0
Your average daily cost	\$3.29	\$6.83	\$5.12