



Your electricity bill

DESERT BREEZE RV PARK LLC

Bill date: December 20, 2011

Your account number: 210646280

For service at: 3 locations

Summary of what you owe

Amount owing on your previous bill	\$392.41
Less Payment made on Nov 30, thank you	-\$392.41
Equals Your balance forward	\$0.00
Plus Your new charges (details on following pages)	
Cost of electricity (with taxes and fees)	\$707.11
Equals Total amount due	\$707.11

Questions or Office Locations?

Call 1-800-253-9407,
 Mon - Fri, 7:30am - 5:00pm
 Website: aps.com
 Para servicio en español llame al:
 1-800-252-9410 (Otras areas)

Due date: January 4, 2012

When paying in person, please
bring the bottom portion of your bill.



Your account number
210646280

Bill date
December 20, 2011

Mailing address or phone number change?
Please call 1-800-253-9407.

Total amount due: \$ **707.11**

Your optional contribution
to SHARE: \$ _____

Total amount paid: \$ _____

Due date: **Jan 4, 2012**

DESERT BREEZE RV PARK LLC
PMB 225
2554 W 16 ST
YUMA AZ 85364-4229



Things you need to know

Contacting APS

- E-mail us at aps@aps.com
- Call us at:
602-371-6767 (Phoenix) or 800-253-9407 (Other areas)
Mon-Fri, 7:30 am - 5:00 pm
- Para servicio en español llame al:
602-371-6861 (Phoenix) o 1-800-252-9410 (Otras areas)
- Hearing impaired:
Dial 711 - AZ Relay Service
- By mail: APS, Station 3200, PO Box 53933,
Phoenix AZ 85072-3933
- Blue Stake - Before you dig, call:
811 or 800-782-5348 from anywhere within Arizona
- Electrical emergencies other than power outages, call:
602-258-5483 (Phoenix) or 800-253-9408 (Other areas)

Important billing and collection information

Make checks payable to APS and mail to:
APS, PO Box 2906, Phoenix AZ 85062-2906

Credit and Collections:
602-371-7607 (Phoenix) or 1-800-253-9409 (Other areas)

All bills for utility services are due and payable no later than 15 days from the date of the bill. Any payments not received within this time-frame shall be considered delinquent and are subject to a late payment charge of 1.5% per month.

If your power is shut off for non-payment, you must pay all the delinquent amounts and a deposit or additional deposit before power is restored.

When you provide a check as payment, you authorize us either to use information from your check to make a one-time electronic funds transfer from your account or to process the payment as a check transaction. When we process your check electronically you will not receive your check back from your financial institution and funds may be withdrawn from your account on the same day we receive your payment.

Utility regulations and rates (Not an APS payment site)

Electricity regulations and rates are approved by:
Arizona Corporation Commission,
1200 W Washington, Phoenix AZ 85007
602-542-4251 (Phoenix) or 1-800-222-7000 (Other areas).
www.cc.state.az.us

Page 2 of 6

Sign up for SurePay Automatic Payments!

Desert Breeze Rv Park LLC	Phone ()
Optional SHARE Contribution to be added to my Monthly Bill (\$1 to \$9) \$_____	
My signature authorizes APS to electronically debit my bank account on the billing due date to pay the total amount due each month. Use the enclosed check payment to set up automatic payments. To terminate SurePay, I will contact APS. (Intended for mailed-in payments only. No counter checks.)	
Signature:	



PO BOX 2906
PHOENIX AZ 85062-2906
APDF1T1DDTAACFATTATDCFAITTAFAACF1DFFFAAF/AF/ADDFDAAFAF/FAADDDTT

Your electricity bill
December 20, 2011

DESERT BREEZE RV PARK LLC

Your account number
210646280

Summary of charges by service address

Service number	Service address	Total electricity used (kWh)	Billed demand (kW)	Other charges and credits (\$)	Total charges (\$)
0843S20284	386 S May Ave Ldry, Yuma Desert Breeze Rv Park LLC	438	3.0	\$0.00	\$83.68
6653S20287	386 S May Ave Rv-sps, Yuma Desert Breeze Rv Park LLC	1386	8.0	\$0.00	\$211.49
9401S92288	386 S May Ave Spc 25, Yuma	2873	9.0	\$0.00	\$411.94
Total		4697		\$0.00	\$707.11



Your electricity bill
December 20, 2011

DESERT BREEZE RV PARK LLC

Your account number
210646280

New charges for 386 S May Ave Ldry

Your service plan: E-32 XS/S
Service number: 0843S20284
DBA: Desert Breeze Rv Park LLC

Meter number: W72996
Meter reading cycle: 12

Charges for electricity services

Cost of electricity you used

Basic service charge	\$4.28
Delivery service charge	\$17.86
Demand charge - delivery	\$0.00
Environmental benefits surcharge	\$5.63
Federal environmental improvement surcharge	\$0.07
System benefits charge	\$0.92
Power supply adjustment*	-\$2.48
Metering*	\$13.70
Meter reading*	\$2.31
Billing*	\$2.55
Generation of electricity*	\$29.78
Federal transmission and ancillary services*	\$1.86
Federal transmission cost adjustment*	\$1.08
Cost of electricity you used	\$77.56

Taxes and fees

Regulatory assessment	\$0.14
State sales tax	\$5.13
County sales tax	\$0.85
City sales tax	\$0.00
Franchise fee	\$0.00
Cost of electricity with taxes and fees	\$83.68

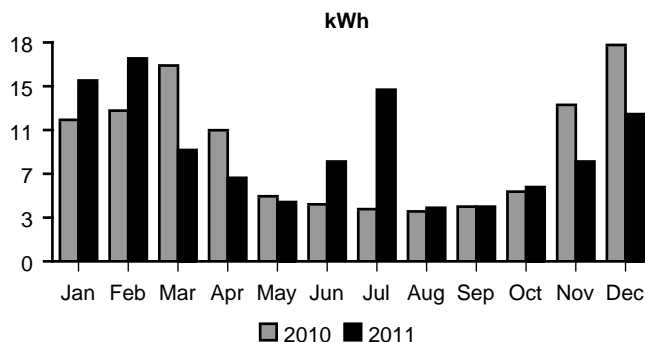
Total charges for electricity services \$83.68

* These services are currently provided by APS but may be provided by a competitive supplier.

Amount of electricity you used

Meter reading on Dec 14	4838
Meter reading on Nov 10	4400
Total electricity you used, in kWh	438
Demand meter reading	2.94
Your billed demand in kW	3.0

Average daily electricity use per month



Comparing your monthly use

	This month	Last month	This month last year
Billing days	34	28	33
Average outdoor temperature	59°	73°	60°
Your total use in kWh	438	247	623
Your billed demand in kW	3.0	2.0	3.0
Your average daily cost	\$2.46	\$1.91	\$3.22

Your electricity bill
December 20, 2011

DESERT BREEZE RV PARK LLC

Your account number
210646280

New charges for 386 S May Ave Rv-sps

Your service plan: E-32 XS/S
Service number: 6653S20287
DBA: Desert Breeze Rv Park LLC

Meter number: W72994
Meter reading cycle: 12

Charges for electricity services

Cost of electricity you used

Basic service charge	\$4.28
Delivery service charge	\$56.52
Demand charge - delivery	\$0.00
Environmental benefits surcharge	\$17.81
Federal environmental improvement surcharge	\$0.22
System benefits charge	\$2.91
Power supply adjustment*	-\$7.84
Metering*	\$13.70
Meter reading*	\$2.31
Billing*	\$2.55
Generation of electricity*	\$94.25
Federal transmission and ancillary services*	\$5.88
Federal transmission cost adjustment*	\$3.42
Cost of electricity you used	\$196.01

Taxes and fees

Regulatory assessment	\$0.36
State sales tax	\$12.96
County sales tax	\$2.16
City sales tax	\$0.00
Franchise fee	\$0.00
Cost of electricity with taxes and fees	\$211.49

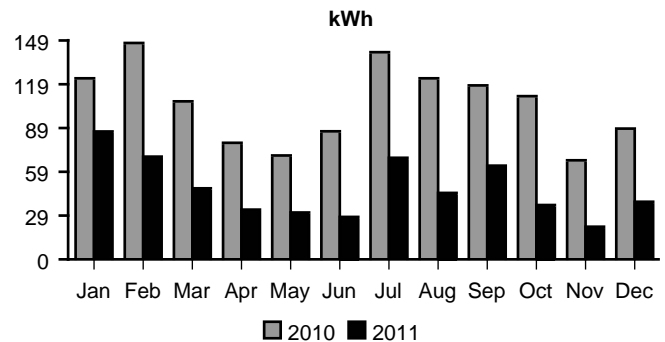
Total charges for electricity services \$211.49

* These services are currently provided by APS but may be provided by a competitive supplier.

Amount of electricity you used

Meter reading on Dec 14	27201
Meter reading on Nov 10	25815
Total electricity you used, in kWh	1386
Demand meter reading	8.16
Your billed demand in kW	8.0

Average daily electricity use per month



Comparing your monthly use

	This month	Last month	This month last year
Billing days	34	28	33
Average outdoor temperature	59°	73°	60°
Your total use in kWh	1386	666	2995
Your billed demand in kW	8.0	6.0	13.0
Your average daily cost	\$6.22	\$3.93	\$12.75



Your electricity bill
December 20, 2011

DESERT BREEZE RV PARK LLC

Your account number
210646280

New charges for 386 S May Ave Spc 25

Your service plan: E-32 XS/S
Service number: 9401S92288

Charges for electricity services

Cost of electricity you used

Basic service charge	\$4.28
Delivery service charge	\$117.16
Demand charge - delivery	\$0.00
Environmental benefits surcharge	\$36.92
Federal environmental improvement surcharge	\$0.46
System benefits charge	\$6.03
Power supply adjustment*	-\$16.25
Metering*	\$13.70
Meter reading*	\$2.31
Billing*	\$2.55
Generation of electricity*	\$195.36
Federal transmission and ancillary services*	\$12.18
Federal transmission cost adjustment*	\$7.08
Cost of electricity you used	\$381.78

Taxes and fees

Regulatory assessment	\$0.71
State sales tax	\$25.24
County sales tax	\$4.21
City sales tax	\$0.00
Franchise fee	\$0.00
Cost of electricity with taxes and fees	\$411.94

Total charges for electricity services \$411.94

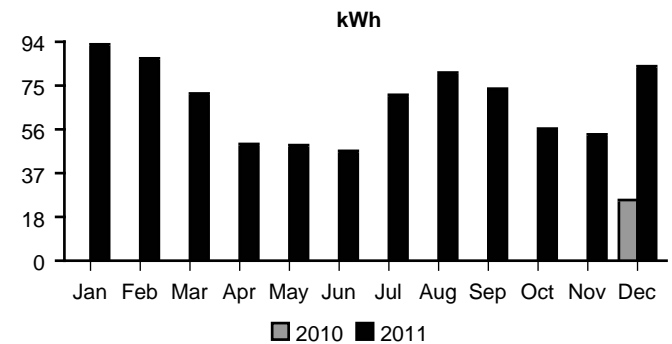
* These services are currently provided by APS but may be provided by a competitive supplier.

Meter number: W50860
Meter reading cycle: 12

Amount of electricity you used

Meter reading on Dec 14	25947
Meter reading on Nov 10	23074
Total electricity you used, in kWh	2873
Demand meter reading	9.04
Your billed demand in kW	9.0

Average daily electricity use per month



Comparing your monthly use

	This month	Last month	This month last year
Billing days	34	28	23
Average outdoor temperature	59°	73°	58°
Your total use in kWh	2873	1546	620
Your billed demand in kW	9.0	8.0	6.0
Your average daily cost	\$12.11	\$8.16	\$4.29