



# Your electricity bill

Bill date: September 21, 2012

Frank Chernek

Your account number: 740316280

For service at: 6 locations

## Summary of what you owe

Amount owing on your previous bill	\$93.35
<b>Less</b> Payment made on Aug 28, thank you	<b>-\$93.35</b>
<b>Equals</b> Your balance forward	<b>\$0.00</b>
<b>Plus</b> Your new charges (details on following pages)	
Cost of electricity (with taxes and fees)	\$108.19
<b>Equals Total amount due</b>	<b>\$108.19</b>

**Due date: October 4, 2012**

### Questions or Office Locations?

Call 1-800-253-9405, 24 hours a day  
Website: [aps.com](http://aps.com)  
Para servicio en español llame al:  
1-800-252-9410 (Otras areas)

### BE ON TIME WITH SUREPAY

Take the worry out of paying your electric bill on time. Sign up for SurePay, our automatic payment program. You'll always be on time and you'll even save some time. Just complete the enclosed form on page 2 of your bill and mail it in with your payment. Visit [aps.com/SurePay](http://aps.com/SurePay) to learn more.

When paying in person, please bring the bottom portion of your bill.



Your account number  
**740316280**

Bill date  
**September 21, 2012**

Mailing address or phone number change?  
Check here and fill in the details on the back.

Total amount due: \$ **108.19**

Your optional contribution to SHARE: \$ \_\_\_\_\_

Total amount paid: \$ \_\_\_\_\_

Due date: **Oct 4, 2012**

FRANK CHERNEK  
PMB 225  
2554 W 16 ST  
YUMA AZ 85364-4229



## News from APS

### SIGN UP THE HASSLE-FREE WAY

Enroll in SurePay, our free automatic payment program. Your APS payment will always be on time and you'll save time. Plus you'll enjoy:

- **Convenience** - Your bill is paid automatically each month, even while you're away.
- **Security** - No more checks to write and mail, or leave in an unsecured mailbox.
- **Control** - We'll send you a monthly statement or e-mail to confirm your payment and the exact date it will be deducted from your bank account.

## Things you need to know

### Contacting APS

- E-mail us at [aps@aps.com](mailto:aps@aps.com)
- Call us at:  
602-371-7171 (Phoenix) or 800-253-9405 (Other areas)  
24 hours a day
- Para servicio en español llame al:  
602-371-6861 (Phoenix) o 1-800-252-9410 (Otras areas)
- Hearing impaired:  
Dial 711 - AZ Relay Service
- By mail: APS, Station 3200, PO Box 53933,  
Phoenix AZ 85072-3933
- Blue Stake - Before you dig, call:  
811 or 800-782-5348 from anywhere within Arizona
- Electrical emergencies other than power outages, call:  
602-258-5483 (Phoenix) or 800-253-9408 (Other areas)

### Important billing and collection information

Make checks payable to APS and mail to:  
APS, PO Box 2906, Phoenix AZ 85062-2906

Credit and Collections:  
602-371-7607 (Phoenix) or 1-800-253-9409 (Other areas)

All bills for utility services are due and payable no later than 15 days from the date of the bill. Any payments not received within this time-frame shall be considered delinquent and are subject to a late payment charge of 1.5% per month.

If your power is shut off for non-payment, you must pay all the delinquent amounts and a deposit or additional deposit before power is restored.

When you provide a check as payment, you authorize us either to use information from your check to make a one-time electronic funds transfer from your account or to process the payment as a check transaction. When we process your check electronically you will not receive your check back from your financial institution and funds may be withdrawn from your account on the same day we receive your payment.

### Utility regulations and rates (Not an APS payment site)

Electricity regulations and rates are approved by:  
Arizona Corporation Commission,  
1200 W Washington, Phoenix AZ 85007  
602-542-4251 (Phoenix) or 1-800-222-7000 (Other areas).  
[www.cc.state.az.us](http://www.cc.state.az.us)

Page 2 of 10

### Sign up for SurePay Automatic Payments!

Frank Chernek	Phone (     )
Optional SHARE Contribution to be added to my Monthly Bill (\$1 to \$9) \$____	
My signature authorizes APS to electronically debit my bank account on the billing due date to pay the total amount due each month. Use the enclosed check payment to set up automatic payments. To terminate SurePay, I will contact APS. (Intended for mailed-in payments only. No counter checks.)	
<b>Signature:</b>	

### Mailing address or phone number change

First name, middle name, last name		
Address (number, street name)		
City	State	Zip + 4
Home phone (     )	Business phone (     )	



PO BOX 2906  
PHOENIX AZ 85062-2906  
APSDFTTTDDTAACFATTATDLCFATFTANFADFTLDFFTFAFF/AF/ADDFDANF/AF/TF/ADDTDT

Your electricity bill  
September 21, 2012

Frank Chernek

Your account number  
740316280

## Summary of charges by service address

Service number	Service address	Total electricity used (kWh)	Billed demand (kW)	Other charges and credits (\$)	Total charges (\$)
1543S20288	345 S May Ave North, Yuma Lone Park Rv	5	0.0	\$0.00	\$22.51
4953S20283	345 S May Ave Spc 2m, Yuma	2	0.0	\$0.00	\$9.46
2543S20288	345 S May Ave Spc 5m, Yuma	0	0.0	\$0.00	\$9.23
0161S12282	345 S May Ave Unit B, Yuma	0	0.0	\$0.00	\$9.84
0161S12282	345 S May Ave Unit B, Yuma	0	0.0	\$0.00	\$9.23
3843S20281	345 S May Ave Spc 1, Yuma	139	0.0	\$0.00	\$25.41
5933S20280	345 S May Ave South, Yuma Lone Star Rv Park	5	0.0	\$0.00	\$22.51
<b>Total</b>		<b>151</b>		<b>\$0.00</b>	<b>\$108.19</b>



Your electricity bill  
September 21, 2012

Frank Cherek

Your account number  
740316280

## New charges for 345 S May Ave North

Your service plan: E-32 XS/S  
Service number: 1543S20288  
DBA: Lone Park Rv

Meter number: W51222  
Meter reading cycle: 12

### Charges for electricity services

#### Cost of electricity you used

Customer account charge	\$3.78
Delivery service charge	\$0.21
Demand charge - delivery	\$0.00
Environmental benefits surcharge	\$0.04
Federal environmental improvement surcharge	\$0.00
System benefits charge	\$0.01
Power supply adjustment*	-\$0.02
Metering*	\$12.09
Meter reading*	\$2.04
Billing*	\$2.25
Generation of electricity*	\$0.43
Federal transmission and ancillary services*	\$0.02
Federal transmission cost adjustment*	\$0.01
<b>Cost of electricity you used</b>	<b>\$20.86</b>

#### Taxes and fees

Regulatory assessment	\$0.04
State sales tax	\$1.38
County sales tax	\$0.23
City sales tax	\$0.00
Franchise fee	\$0.00
<b>Cost of electricity with taxes and fees</b>	<b>\$22.51</b>

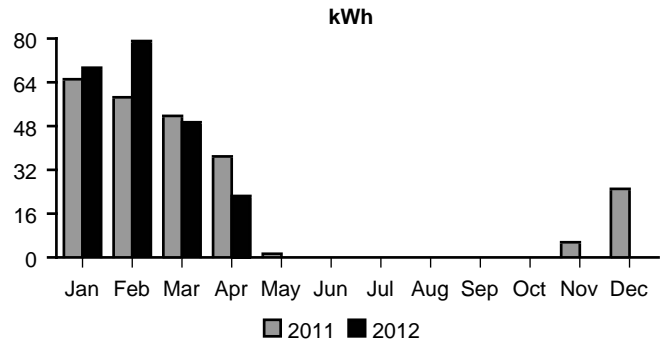
**Total charges for electricity services \$22.51**

\* These services are currently provided by APS but may be provided by a competitive supplier.

### Amount of electricity you used

Meter reading on Sep 19	17915
Meter reading on Aug 20	17910
<b>Total electricity you used, in kWh</b>	<b>5</b>
Demand meter reading	0.00
<b>Your billed demand in kW</b>	<b>0.0</b>

#### Average daily electricity use per month



#### Comparing your monthly use

	This month	Last month	This month last year
Billing days	30	32	30
Average outdoor temperature	91°	95°	95°
Your total use in kWh	5	5	8
Your billed demand in kW	0.0	0.0	0.0
Your average daily cost	\$0.75	\$0.74	\$0.76

Your electricity bill  
September 21, 2012

Frank Cherek

Your account number  
740316280

## New charges for 345 S May Ave Spc 2m

Your service plan: Standard Rate  
Service number: 4953S20283

### Charges for electricity services

#### Cost of electricity you used

Customer account charge	\$1.89
Delivery service charge	\$0.05
Environmental benefits surcharge	\$0.02
Federal environmental improvement surcharge	\$0.00
System benefits charge	\$0.01
Power supply adjustment*	-\$0.01
Metering*	\$2.70
Meter reading*	\$1.86
Billing*	\$2.10
Generation of electricity*	\$0.12
Federal transmission and ancillary services*	\$0.01
Federal transmission cost adjustment*	\$0.01
Cost of electricity you used	\$8.76

#### Taxes and fees

Regulatory assessment	\$0.02
State sales tax	\$0.58
County sales tax	\$0.10
City sales tax	\$0.00
Franchise fee	\$0.00
Cost of electricity with taxes and fees	\$9.46

**Total charges for electricity services \$9.46**

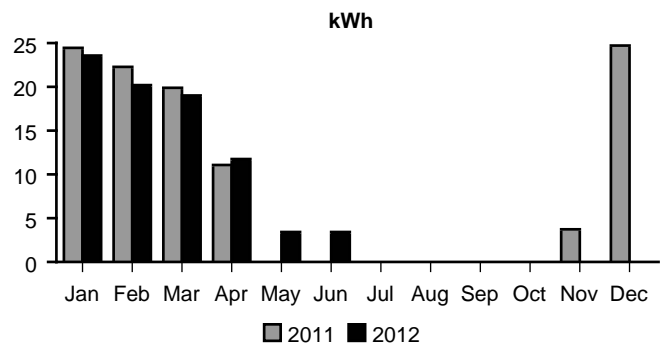
\* These services are currently provided by APS but may be provided by a competitive supplier.

Meter number: W25000  
Meter reading cycle: 12

### Amount of electricity you used

Meter reading on Sep 19	6953
Meter reading on Aug 20	6951
<b>Total electricity you used, in kWh</b>	<b>2</b>

#### Average daily electricity use per month



#### Comparing your monthly use

	This month	Last month	This month last year
Billing days	30	32	30
Average outdoor temperature	91°	95°	95°
Your total use in kWh	2	2	5
Your average daily cost	\$0.31	\$0.31	\$0.32



Your electricity bill  
September 21, 2012

Frank Cherek

Your account number  
740316280

## New charges for 345 S May Ave Spc 5m

Your service plan: Standard Rate  
Service number: 2543S20288

### Charges for electricity services

#### Cost of electricity you used

Customer account charge	\$1.89
Delivery service charge	\$0.00
Environmental benefits surcharge	\$0.00
Federal environmental improvement surcharge	\$0.00
System benefits charge	\$0.00
Power supply adjustment*	\$0.00
Metering*	\$2.70
Meter reading*	\$1.86
Billing*	\$2.10
Generation of electricity*	\$0.00
Federal transmission and ancillary services*	\$0.00
Federal transmission cost adjustment*	\$0.00
Cost of electricity you used	\$8.55

#### Taxes and fees

Regulatory assessment	\$0.02
State sales tax	\$0.57
County sales tax	\$0.09
City sales tax	\$0.00
Franchise fee	\$0.00
Cost of electricity with taxes and fees	\$9.23

**Total charges for electricity services \$9.23**

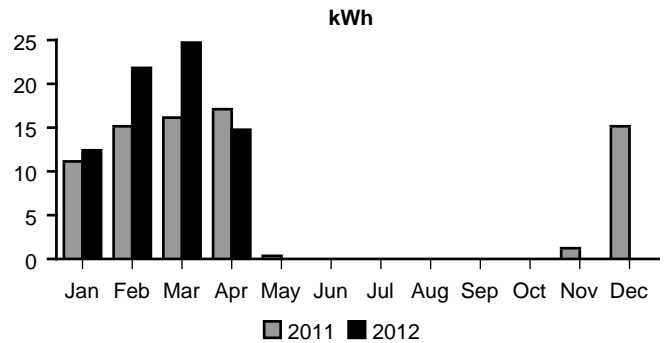
\* These services are currently provided by APS but may be provided by a competitive supplier.

Meter number: W24968  
Meter reading cycle: 12

### Amount of electricity you used

Meter reading on Sep 19	5448
Meter reading on Aug 20	5448
<b>Total electricity you used, in kWh</b>	<b>0</b>

#### Average daily electricity use per month



#### Comparing your monthly use

	This month	Last month	This month last year
Billing days	30	32	30
Average outdoor temperature	91°	95°	95°
Your total use in kWh	0	0	0
Your average daily cost	\$0.30	\$0.30	\$0.30

Your electricity bill  
September 21, 2012

Frank Cherek

Your account number  
740316280

## New charges for 345 S May Ave Unit B

Your service plan: Standard Rate  
Service number: 0161S12282

### Charges for electricity services

#### Cost of electricity you used

Customer account charge	\$2.02
Delivery service charge	\$0.00
Environmental benefits surcharge	\$0.00
Federal environmental improvement surcharge	\$0.00
System benefits charge	\$0.00
Power supply adjustment*	\$0.00
Metering*	\$2.88
Meter reading*	\$1.98
Billing*	\$2.24
Generation of electricity*	\$0.00
Federal transmission and ancillary services*	\$0.00
Federal transmission cost adjustment*	\$0.00
<b>Cost of electricity you used</b>	<b>\$9.12</b>

#### Taxes and fees

Regulatory assessment	\$0.02
State sales tax	\$0.60
County sales tax	\$0.10
City sales tax	\$0.00
Franchise fee	\$0.00
<b>Cost of electricity with taxes and fees</b>	<b>\$9.84</b>

**Total charges for electricity services \$9.84**

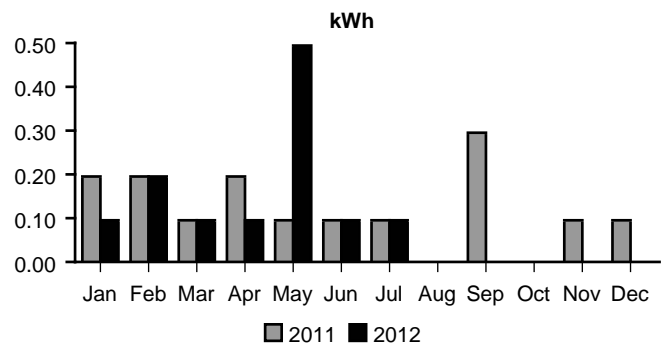
\* These services are currently provided by APS but may be provided by a competitive supplier.

Meter number: W30068  
Meter reading cycle: 12

### Amount of electricity you used

Meter reading on Aug 20	89
Meter reading on Jul 19	89
<b>Total electricity you used, in kWh</b>	<b>0</b>

#### Average daily electricity use per month



#### Comparing your monthly use

	This month	Last month	This month last year
Billing days	32	30	31
Average outdoor temperature	95°	92°	95°
Your total use in kWh	0	3	0
Your average daily cost	\$0.30	\$0.31	\$0.30



Your electricity bill  
September 21, 2012

Frank Cherek

Your account number  
740316280

## New charges for 345 S May Ave Unit B

Your service plan: Standard Rate  
Service number: 0161S12282

Meter number: W30068  
Meter reading cycle: 12

### Charges for electricity services

### Amount of electricity you used

#### Cost of electricity you used

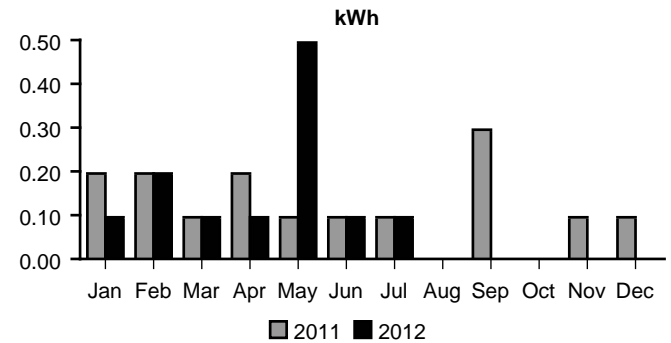
Customer account charge	\$1.89
Delivery service charge	\$0.00
Environmental benefits surcharge	\$0.00
Federal environmental improvement surcharge	\$0.00
System benefits charge	\$0.00
Power supply adjustment*	\$0.00
Metering*	\$2.70
Meter reading*	\$1.86
Billing*	\$2.10
Generation of electricity*	\$0.00
Federal transmission and ancillary services*	\$0.00
Federal transmission cost adjustment*	\$0.00
<b>Cost of electricity you used</b>	<b>\$8.55</b>

Meter reading on Sep 19	89
Meter reading on Aug 20	89
<b>Total electricity you used, in kWh</b>	<b>0</b>

#### Taxes and fees

Regulatory assessment	\$0.02
State sales tax	\$0.57
County sales tax	\$0.09
City sales tax	\$0.00
Franchise fee	\$0.00
<b>Cost of electricity with taxes and fees</b>	<b>\$9.23</b>

### Average daily electricity use per month



### Comparing your monthly use

	This month	Last month	This month last year
Billing days	30	32	30
Average outdoor temperature	91°	95°	95°
Your total use in kWh	0	0	8
Your average daily cost	\$0.30	\$0.30	\$0.33

\* These services are currently provided by APS but may be provided by a competitive supplier.



Your electricity bill  
September 21, 2012

Frank Cherek

Your account number  
740316280

## New charges for 345 S May Ave Spc 1

Your service plan: Standard Rate  
Service number: 3843S20281

### Charges for electricity services

#### Cost of electricity you used

Customer account charge	\$1.89
Delivery service charge	\$3.75
Environmental benefits surcharge	\$1.35
Federal environmental improvement surcharge	\$0.00
System benefits charge	\$0.41
Power supply adjustment*	-\$0.58
Metering*	\$2.70
Meter reading*	\$1.86
Billing*	\$2.10
Generation of electricity*	\$8.58
Federal transmission and ancillary services*	\$0.72
Federal transmission cost adjustment*	\$0.75
<b>Cost of electricity you used</b>	<b>\$23.53</b>

#### Taxes and fees

Regulatory assessment	\$0.06
State sales tax	\$1.56
County sales tax	\$0.26
City sales tax	\$0.00
Franchise fee	\$0.00
<b>Cost of electricity with taxes and fees</b>	<b>\$25.41</b>

**Total charges for electricity services \$25.41**

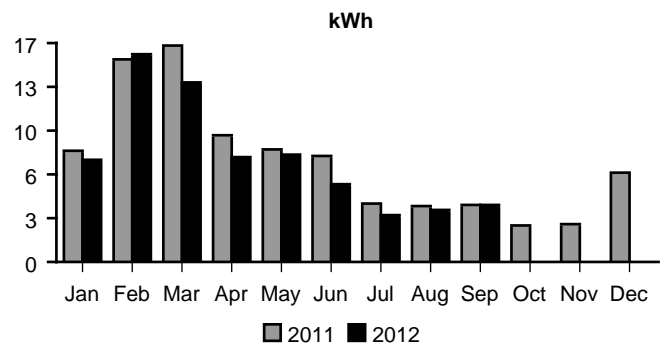
\* These services are currently provided by APS but may be provided by a competitive supplier.

Meter number: W24967  
Meter reading cycle: 12

### Amount of electricity you used

Meter reading on Sep 19	6180
Meter reading on Aug 20	6041
<b>Total electricity you used, in kWh</b>	<b>139</b>

#### Average daily electricity use per month



#### Comparing your monthly use

	This month	Last month	This month last year
Billing days	30	32	30
Average outdoor temperature	91°	95°	95°
Your total use in kWh	139	133	137
Your average daily cost	\$0.84	\$0.79	\$0.84



Your electricity bill  
September 21, 2012

Frank Cherek

Your account number  
740316280

## New charges for 345 S May Ave South

Your service plan: E-32 XS/S  
Service number: 5933S20280  
DBA: Lone Star Rv Park

Meter number: W51221  
Meter reading cycle: 12

### Charges for electricity services

#### Cost of electricity you used

Customer account charge	\$3.78
Delivery service charge	\$0.21
Demand charge - delivery	\$0.00
Environmental benefits surcharge	\$0.04
Federal environmental improvement surcharge	\$0.00
System benefits charge	\$0.01
Power supply adjustment*	-\$0.02
Metering*	\$12.09
Meter reading*	\$2.04
Billing*	\$2.25
Generation of electricity*	\$0.43
Federal transmission and ancillary services*	\$0.02
Federal transmission cost adjustment*	\$0.01
<b>Cost of electricity you used</b>	<b>\$20.86</b>

#### Taxes and fees

Regulatory assessment	\$0.04
State sales tax	\$1.38
County sales tax	\$0.23
City sales tax	\$0.00
Franchise fee	\$0.00
<b>Cost of electricity with taxes and fees</b>	<b>\$22.51</b>

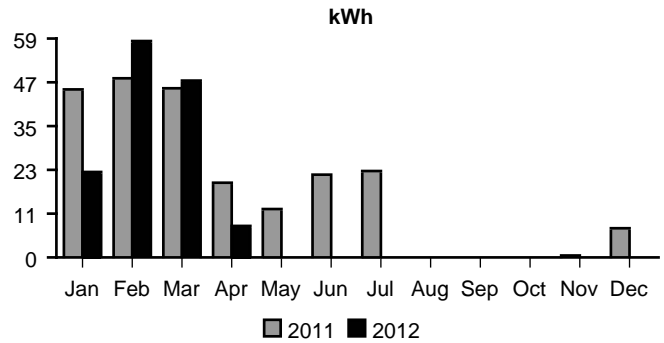
**Total charges for electricity services \$22.51**

\* These services are currently provided by APS but may be provided by a competitive supplier.

### Amount of electricity you used

Meter reading on Sep 19	14372
Meter reading on Aug 20	14367
<b>Total electricity you used, in kWh</b>	<b>5</b>
Demand meter reading	0.01
<b>Your billed demand in kW</b>	<b>0.0</b>

### Average daily electricity use per month



### Comparing your monthly use

	This month	Last month	This month last year
Billing days	30	32	30
Average outdoor temperature	91°	95°	95°
Your total use in kWh	5	6	5
Your billed demand in kW	0.0	0.0	0.0
Your average daily cost	\$0.75	\$0.75	\$0.75